

## IoT-enabled patient tracking

The healthcare eco-system has been increasingly digitalizing with the advent of Internet of Things (IoT), wearables and personal health-monitoring devices. IoT-enabled devices are designed to transmit a patient's health data to a doctor or a medical staff in real time. Having technology solutions that transmit pre-existing health ailments and current symptoms of patients is imperative so that criticality and upcoming hospitalization requirements can be predicted and mapped to the available facilities. Healthcare professionals are bridging the physical gap between patient and medical practitioners by embracing these digital technologies, especially with patients under home quarantine. Wipro EngineeringNXT's IoT-enabled, patient-tracking solution aids transmitting crucial patient data to medical practitioners.

### Key takeaways




Mobile-based tracking of a patient's location, including geofencing and alerting when geofence is breached



Tracking the vital parameters through Bluetooth Low Energy (BLE) based smart medical devices, Wipro's in-house smart patch, OCR or manual entry



An end-to-end solution to flag high-risk individuals and provide stakeholders country-, region-, state-, and individual-specific information regarding quarantine compliance, breaches in thresholds of vital parameters, and analytics-based insights



Real-time patient monitoring system for tracking patient's health data and saving lives

## Key benefits



Real-time geofence/geofence breach information enables stakeholders to take action to reduce community spread

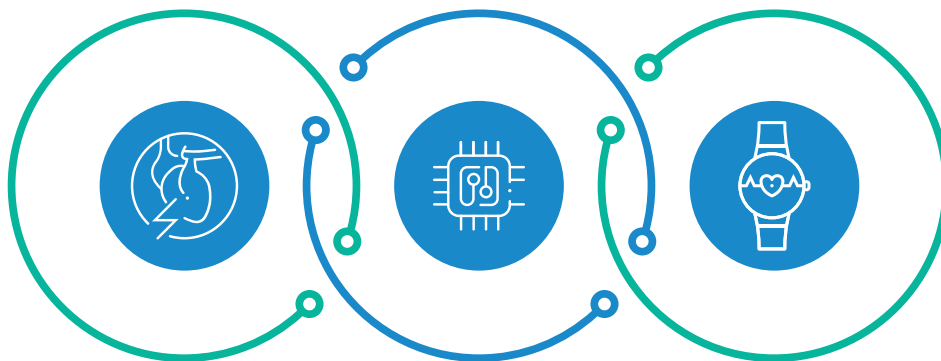


Accurate information and reporting better prepares stakeholders to handle widespread disease



Timely notifications to affected individuals provide relevant information in a timely manner

## Features



**Wipro Assure Health Solution** – An end-to-end, remote monitoring solution for cardiac and maternity care –  
Technology: IoT

**Wipro Assure Care Solution** – An end-to-end home healthcare solution for elderly wellness –  
Technology: IoT

**Wipro Smart Track** – An end-to-end pharma drug tracking solution –  
Technology: IoT and Blockchain



### Wipro Limited

Doddakannelli, Sarjapur Road,  
Bangalore-560 035, India

Tel: +91 (80) 2844 0011  
Fax: +91 (80) 2844 0256  
[wipro.com](http://wipro.com)

Wipro Limited (NYSE: WIT, BSE: 507685, NSE: WIPRO) is a leading global information technology, consulting and business process services company. We harness the power of cognitive computing, hyper-automation, robotics, cloud, analytics and emerging technologies to help our clients adapt to the digital world and make them successful. A company recognized globally for its

comprehensive portfolio of services, strong commitment to sustainability and good corporate citizenship, we have over 175,000 dedicated employees serving clients across six continents. Together, we discover ideas and connect the dots to build a better and a bold new future.

For more information,  
please write to us at  
[info@wipro.com](mailto:info@wipro.com)

