



servicenow®

# ServiceNow IT-GRC

Agile best Practices, accelerators and domain /  
technology expertise for IRM/GRC deployment



Managing risk and compliance with a manual, siloed and reactive work model is no longer effective as the global regulatory environment continuously evolves. As a ServiceNow strategic partner, Wipro provides you with a step-by-step timeline for an industry-specific GRC solution, based on ServiceNow technology, including risk management, reporting, and cybersecurity benefits. Wipro deploys Integrated Risk Management (IRM)/Governance, Risk and Compliance (GRC) onto your ServiceNow platform, leveraging best practices, accelerators and sector/domain/technology expertise, through an aggressive Agile project.

## Key benefits



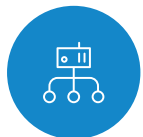
Manages risks in real-time



Simplifies GRC process and eliminate errors



Optimizes internal audit productivity



Improves strategic planning and decision making



Experienced leading managed services organization



Enables a mature organizational GRC program through automation and integration



Offers evidence collection to regulatory requirements in one solution



Connects the three lines of defense

**Leverage the power of ServiceNow software to realize stronger risk, compliance, and assurance management for your organization.**

## The Wipro advantage

Many enterprises have discovered that without an integrated view of risk, it is virtually impossible to quickly assess the impact on their existing compliance obligations and risk posture of these changes. The recent pandemic has highlighted the urgent need for resilience in your information system. This cannot be achieved without an end-to-end GRC solution such as ServiceNow IRM.

### Policy and Compliance Management

Consolidate, create, and manage organizational standards, policies, and internal procedures that are mapped with standard industry regulations.

### Risk Management - Advanced Risk Management

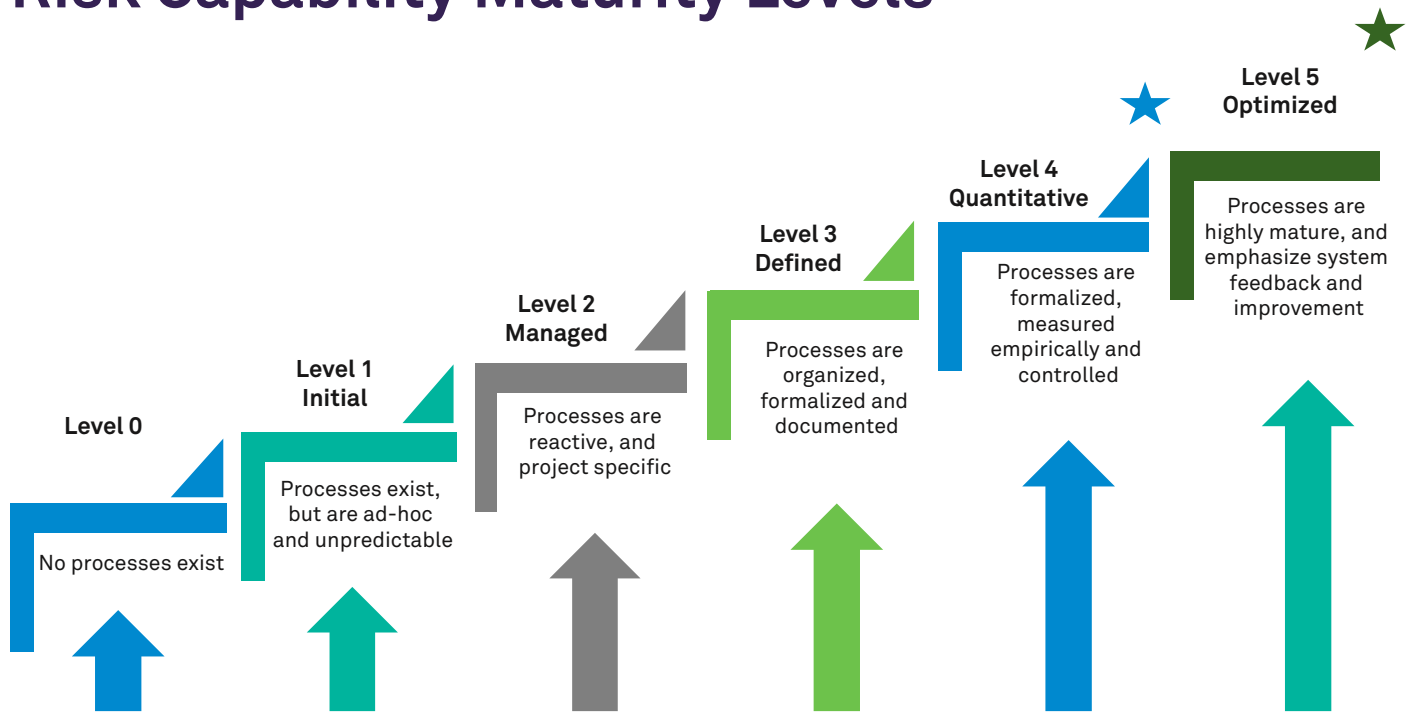
Locate, validate, monitor, and respond to IT as well as enterprise risks that can adversely impact your business operations.

### Audit Management - Advanced Audit Management

Plan and execute audit engagements through risk data to strengthen audit assurance and minimize redundant audit findings

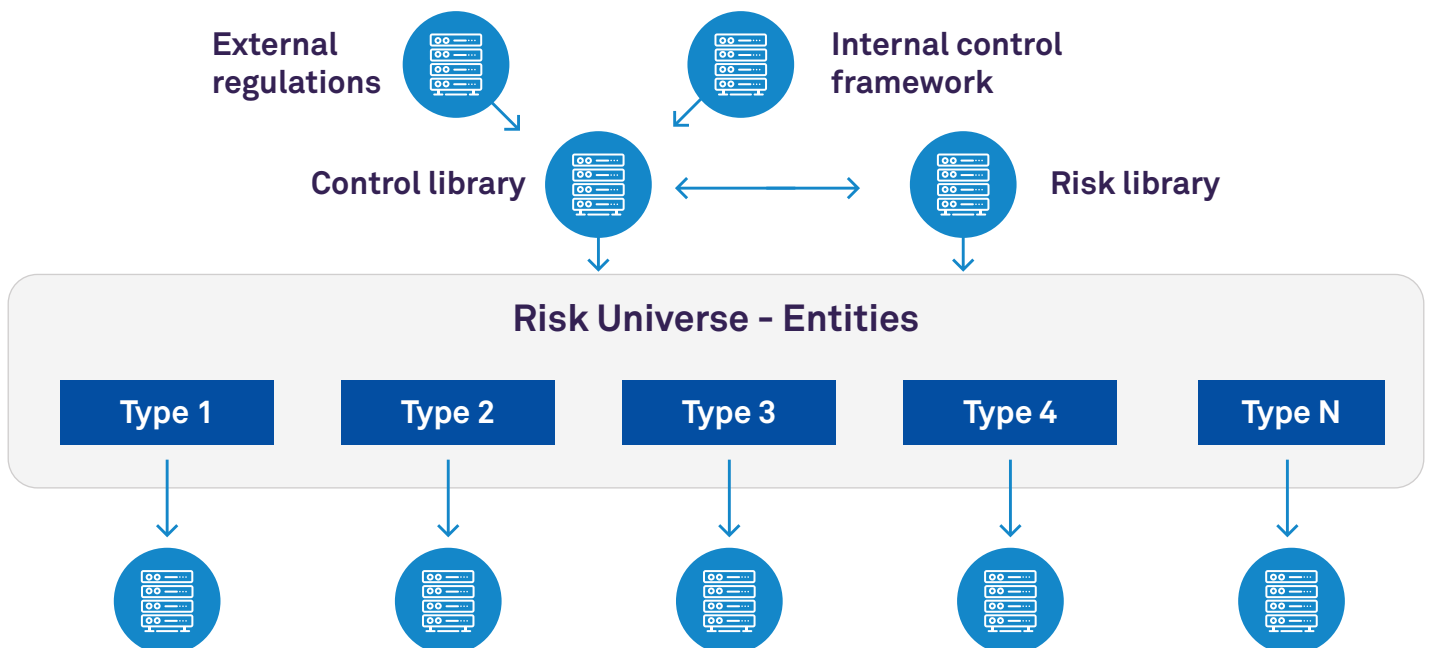
Deliver value for your business with the ServiceNow IRM/GRC solution.

## Risk Capability Maturity Levels



## Improved top-down system

Organized, efficient for scale





---

**Wipro Limited**  
Doddakannelli,  
Sarjapur Road,  
Bangalore-560 035,  
India  
Tel: +91 (80) 2844 0011  
Fax: +91 (80) 2844 0256  
**wipro.com**

Wipro Limited (NYSE: WIT, BSE: 507685, NSE: WIPRO) is a leading global information technology, consulting and business process services company. We harness the power of cognitive computing, hyper-automation, robotics, cloud, analytics and emerging technologies to help our clients adapt to the digital world and make them successful. A company recognized globally for its comprehensive portfolio of services,

strong commitment to sustainability and good corporate citizenship, we have over 200,000 dedicated employees serving clients across six continents. Together, we discover ideas and connect the dots to build a better and a bold new future.

For more information,  
please write to us at [info@wipro.com](mailto:info@wipro.com)