

A family of four is shown in an airport setting. A woman in a yellow dress and hat is smiling and holding sunglasses. A man in a pink polo shirt is looking forward. A young girl in a blue dress is smiling. A young boy in a light blue shirt is standing next to a red suitcase. The background shows airport check-in counters and a bright, modern interior.

Travel in 2020 and beyond

Creating new age
travel experiences

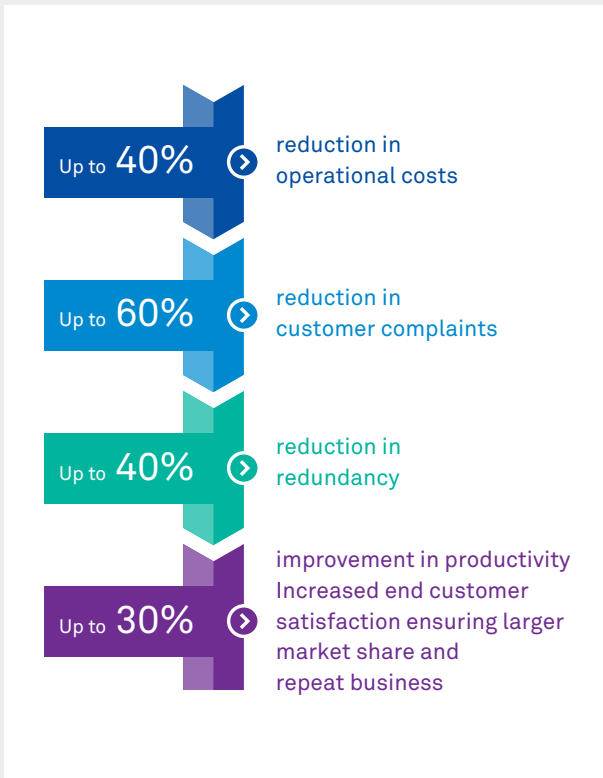
Travel services are facing challenges such as profitability, changing traveler needs and reducing operational costs. Equipped with remarkable domain expertise and customer support services, Wipro provides an integrated solution to meet the evolving needs of your business to manage changing traveler needs, meet seasonality demands and handle fraud along with finance & accounting and human resources services.

Helping customers in their journey to 're-invent' their business and operating models with our digital first approach and best in class execution.

Key Takeaways

- Innovative new age delivery model to help you be more nimble, reduce costs and arrest revenue leakages
- Wide ranging solutions to improve business profitability, scalability and sustainability through automated technology solutions and domain expertise
- Streamlined processes to drive business value and performance through business driven objectives and process excellence projects
- Highly effective customer support services leading to better customer satisfaction and experiences

Key Benefit



We bring an integrated perspective and provide end-to-end services leveraging our robust delivery framework.

- Human resources services such as talent acquisition, workforce administration, payroll, benefits, learning and development, performance management etc.
- Finance & accounting services like source to pay, order to cash, record to report, high-end finance, and more
- Front and back office operations in trust and safety, content & marketing and passenger services

Features

Our offerings focused on travel companies include:

- Customer service via chat, email, web support, social media, phone, and other such mediums

Wipro Limited
Doddakannelli, Sarjapur Road,
Bangalore-560 035,
India

Tel: +91 (80) 2844 0011
Fax: +91 (80) 2844 0256

wipro.com

Wipro Limited (NYSE: WIT, BSE: 507685, NSE: WIPRO) is a leading global information technology, consulting and business process services company. We harness the power of cognitive computing, hyper-automation, robotics, cloud, analytics and emerging technologies to help our clients adapt to the digital world and make them successful. A company recognized globally for its

comprehensive portfolio of services, strong commitment to sustainability and good corporate citizenship, we have over 180,000 dedicated employees serving clients across six continents. Together, we discover ideas and connect the dots to build a better and a bold new future.

For more information, please write to us at info@wipro.com