



## Wipro's EasyU

Comprehensive solution  
for upgrade to Oracle  
E-Business Suite R12.2.9

Organizations using older versions of Oracle's E-Business Suite will need to be upgraded as the premier support for the Oracle E-Business 12.1 will run out by December 2021. Increasing security threats, incompatibility of older versions to accommodate new functionalities and modern constructs and features necessitate this upgrade before it becomes a complex and costlier option. Also, by upgrading to the Oracle E-Business Suite 12.2.9, organizations can ensure that the investment stays relevant and also gear up for the modernization journey. However, there are some key challenges in the upgrade process that need to be mitigated.

### Key upgrade challenges:

- Evaluating the right approach to upgrade
- Managing downtime
- De-risking the upgrade processes
- Finding the right balance between technical upgrades vs. transformation upgrades
- Data losses owing to inconsistencies
- Speed to upgrade

### Wipro's EasyU:

Wipro's EasyU – our breakthrough upgrade tool ensures a quick and comprehensive impact analysis of your current Oracle landscape and automates upgrades of custom components, thereby accelerating the upgrade cycle. With its easy-to-understand, accurate and reliable information, EasyU enables you to make the correct decision regarding upgrade of Oracle Apps.

## Take the rapid and efficient upgrade route with Wipro's EasyU

### Key Features:

- Business Intelligence Dashboard:
  - Customizations of various objects
  - Actual usage patterns of various elements
  - Critical application information
  - Related modules in use and key transactions
  - Highlight new features of E-Business Suite R12
  - Upgrade vs. re-implementation – assessment and macro level recommendations
- Automated Impact Analysis:
  - Comprehensive customization analysis and impact assessment on forms, reports and tables
  - Impacted object categorization – simple, medium and complex
  - Upgrade specific detailed application and database information
  - Functional organization structure with chart of accounts details
- Developer Module:
  - Auto scan the custom code
  - Suggest solutions for replacing impacted objects
  - Automatically apply suggestions and compile code

## Wipro's EasyU Value Proposition:



De-risks upgrade projects and provides more predictability by making it accurate, reliable, and enabling repeatability every time



Accelerates upgrade assessment and upgrade execution, saves 40% time and effort in technical upgrade assessment



Supports the lifecycle of upgrade – 'Assessment to Attain'

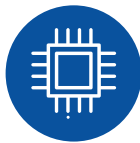


Reduces the downtime window with efficient planning and management



Reduces overall upgrade program timeline by 22% with automated upgrade of custom components

## Success Stories:



- **For a large global semiconductor company:**

→ Technical upgrade from with increased automation and harmonized processes

→ **Benefits:**

- » Enabled R12 functionality across Finance/SCM business process
- » Business process enhancement by Enterprise Command Center and Audit Management Expert (AME) parallel approvals process with reference to Account Payables, Account Receivable and Cost Accounting
- » Automated processes / integrated systems improving data integrity by reducing time on transactional activities



- **For a leading HVAC manufacturer in the US:**

→ A hybrid model involving upgrade and implementation

→ **Benefits:**

- » A seamless upgrade process across the North America and Middle East geographies in a short time
- » Additional functionalities enabled in both financials and manufacturing areas
- » Upgrade interfaces with boundary apps to ensure compatibility with Oracle R12.1.6 for all applicable boundary environments



## **Wipro Limited**

Doddakannelli, Sarjapur Road,  
Bangalore-560 035, India

Tel: +91 (80) 2844 0011

Fax: +91 (80) 2844 0256

**wipro.com**

Wipro Limited (NYSE: WIT, BSE: 507685, NSE: WIPRO) is a leading global information technology, consulting and business process services company. We harness the power of cognitive computing, hyper-automation, robotics, cloud, analytics and emerging technologies to help our clients adapt to the digital world and make them successful. A company recognized globally for its comprehensive portfolio of services, strong commitment to sustainability and good corporate citizenship, we have over 175,000 dedicated employees serving clients across six continents. Together, we discover ideas and connect the dots to build a better and a bold new future.

For more information,  
please write to us at  
**info@wipro.com**

