

A photograph of a man with a beard and short brown hair, wearing a light blue denim shirt, sitting at a wooden table in a cafe. He is smiling and looking at a laptop in front of him. A glass of coffee is on the table. The background is a bright, out-of-focus cafe interior with large windows.

## Qualtrics based Employee Wellness Assessment

Assess workforce wellbeing to manage business continuity

While organizations shift to a new way of working and adopt the work-from-home model as a fallout of the global pandemic, they also require a concrete mechanism to monitor the well-being of their employees, assess productivity and take necessary actions to ensure business continuity. Wipro's Qualtrics based Employee Wellness Assessment offering helps organizations with an out-of-the-box feedback solution that helps in monitoring the pulse of the workforce.

A large yellow circle graphic containing text.

**Qualtrics delivers an out-of-the-box feedback solution to monitor the pulse of the workforce**

### Key takeaways



Promote and improve employee well-being



Improve employee communication during critical times



Assess employee productivity and take necessary actions to ensure business continuity

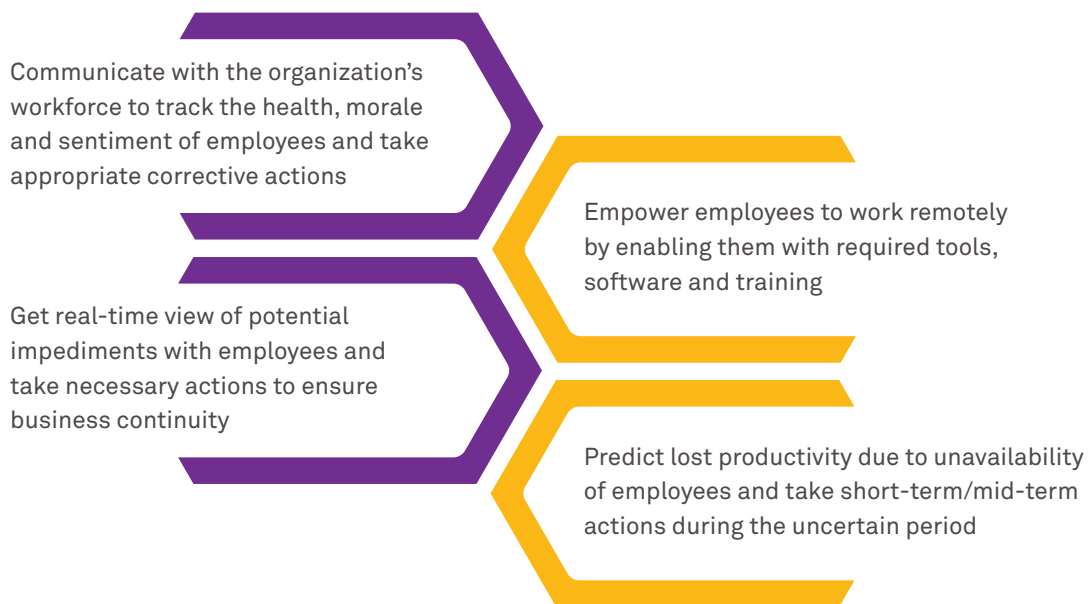
## Features

- **Quick check-in:** Get a holistic view of the employees' morale and mindset through open-text feedback
- **Remote work readiness evaluation:** Identify gaps and take action on five key areas of the remote work experience:
  - **Enablement:** Access to the proper technology, tools and internal support services
  - **Customer needs:** Impact of new workplace environment on employees' ability to serve customers
  - **Mindset:** Impact of changing workplace environment on employee morale

## Monitor employee well-being, assess productivity and take necessary actions to ensure business continuity

- **Communication:** Policy amendments, health and safety practices and other communication to workforce
- **Collaboration:** Employee collaboration with peers, managers and other teams

## Key benefits



**Wipro Limited**  
Doddakannelli, Sarjapur Road,  
Bangalore-560 035, India

Tel: +91 (80) 2844 0011  
Fax: +91 (80) 2844 0256  
[wipro.com](http://wipro.com)

Wipro Limited (NYSE: WIT, BSE: 507685, NSE: WIPRO) is a leading global information technology, consulting and business process services company. We harness the power of cognitive computing, hyper-automation, robotics, cloud, analytics and emerging technologies to help our clients adapt to the digital world and make them successful. A company recognized globally for its

comprehensive portfolio of services, strong commitment to sustainability and good corporate citizenship, we have over 175,000 dedicated employees serving clients across six continents. Together, we discover ideas and connect the dots to build a better and a bold new future.

For more information, please write to us at [info@wipro.com](mailto:info@wipro.com)